

# ALTERRA

AT WEST CREEK



## BUILDING FEATURES

at a glance

- Distinctive barrel-vaulted architectural center element with glass curtain wall
- Two-tone architectural brick and glass exterior
- Spectacular multi-story atrium lobby of marble with granite finishes
- 29' exposed ceiling height in third floor barrel-vaulted area
- Suites ranging from 1,000 to 75,000 square feet
- 9' ceiling heights in all offices
- 9' floor-to-ceiling windows
- 9' mahogany doors with chrome lever hardware
- Extensively landscaped interior lobbies
- Art gallery on ground level
- Shower and locker facilities
- European-style restrooms
- Large 10' elevator cabs with marble and mahogany interiors
- Computer-controlled security card access system
- Energy-efficient construction
- Trane Tracer remote computer-controlled HVAC
- Four parking spaces per 1,000 square feet
- Security lighting
- Hardscaped patio and seating
- Stone-paved entrances
- Granite monument sign



# ALTERRA

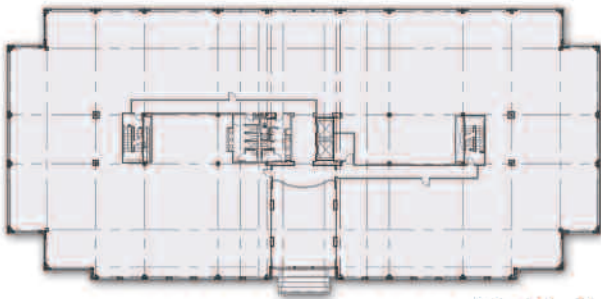
AT WEST CREEK

MASTER PLAN

SITE PLAN

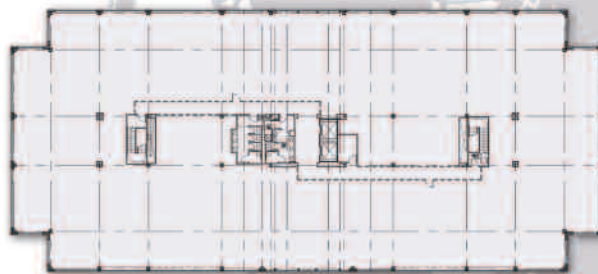


2ND FLOOR



GROUND LEVEL

3RD FLOOR



## THE DEVELOPER

Brandywine Realty Trust is one of the largest full-service completely integrated real estate companies in the United States. Organized as a real estate investment trust (REIT), Brandywine is engaged in the ownership, management, leasing, acquisition and development of office and industrial properties aggregating over 44 million square feet.



**BrandywineRealtyTrust**

Brandywine is dedicated to designing, creating and maintaining memorable working environments, committed to generating the highest possible shareholder value and seeking nothing less than "Best in Class" status in every undertaking. Headquartered in Radnor, PA, Brandywine maintains regional offices in Mount Laurel, NJ; Richmond, VA; Dallas, TX; Falls Church, VA; Oakland, CA; Austin, TX; and Carlsbad, CA.

300 Arboretum Place, Suite 330 | Richmond, VA 23236 | Office: (804) 330-3900 | Fax: (804) 330-4450

[www.brandywinerealty.com](http://www.brandywinerealty.com)